

**International
2020**



WELCOME GUIDE



UNIVERSITY OF LEEDS



KEY DATES

Discover the key dates for the academic year, including term dates, exam periods and more at www.leeds.ac.uk/academic_year

IMPORTANT INFORMATION

Information provided by the University, such as in presentations, University brochures and on the University website, is accurate at the time of first disclosure. However, courses, University services and content of publications remain subject to change. Changes may be necessary to comply with the requirements of accrediting bodies or to keep courses contemporary through updating practices or areas of study. Circumstances may arise outside the reasonable control of the University leading to required changes. Such circumstances include industrial action, unexpected student numbers, significant staff illness (where a course is reliant upon a person's expertise), unexpected lack of funding, severe weather, fire, civil disorder, political unrest, government restrictions and serious concern with regard to the transmission of serious illness making a course unsafe to deliver. After a student has taken up a place with the University, the University will look to give early notification of any changes and try to minimise their impact, offering suitable alternative arrangements or forms of compensation where it believes there is a fair case to do so. The latest key information on courses, entry requirements and fees can be found at courses.leeds.ac.uk. Please check this website before making any decisions.

CONTENTS

WELCOME TO LEEDS	2	ARRIVING IN LEEDS	32
STARTING AT LEEDS	4	Arrival – checklist	33
Starting – checklist	5	Contact points	34
Key contacts	6	Important tasks	36
Welcome and induction	7	Health advice	38
Online registration	10	Keeping safe	40
Your fees	12	Opening a bank account	41
Module enrolment	14	Managing your money	42
		Food and shopping	43
		Getting around	44
LIFE AT LEEDS	16	Feeling at home in Leeds	47
Activities and opportunities	17		
Personal and professional development	20		
Support and wellbeing	22		
Immigration advice	25		
Finding accommodation	26		
Living in your accommodation	29		
Families and children	31		





WELCOME TO LEEDS

As a University of Leeds student, we're really pleased to welcome you and help you settle into university life.

You are part of our vibrant global community of students, postgraduate researchers and staff from all over the world.

Although the COVID-19 pandemic means some things will be different, we're committed to providing you with the high-quality learning and student experience you expect.

We're following the UK government's advice on social distancing, which means teaching activities with large numbers of students will go ahead using digital technology. Teaching in small groups will take place face-to-face and on campus where it's safe and practical to do so – this may vary depending on your course.

If you're unable to travel to campus immediately, you'll have remote access to all the support services and teaching resources you need for your studies.

We've worked with our students' union, Leeds University Union (LUU), to develop a series of activities and events, both on campus and online, so you can be sure of a warm and friendly welcome.

SAFETY ON CAMPUS

Your personal safety remains our top priority. We've put in place lots of things to make our campus and University accommodation safe for when you arrive, including social distancing, providing washable face coverings for everyone, COVID-19 testing and extra cleaning activities. You'll receive more safety guidance as part of your induction. We'll continue to review our safety measures regularly and make any changes, in line with UK government guidance, as quickly as possible. For the most up-to-date information, visit coronavirus.leeds.ac.uk/safety-for-students



We hope you'll enjoy your time at the University of Leeds. We know it's important for you to settle in quickly, so we've produced this guide to help you.

In this guide you'll find:

- what you need to know and do as you start as a University of Leeds student and when you arrive in Leeds
- information about the COVID-19 safety measures we've put in place
- useful contact details
- checklists so you can be sure you don't miss anything
- information about activities and services at the University and life in Leeds



You'll receive more information directly from your University school about your course, including details about specific events and activities.

You'll also find more information and advice at students.leeds.ac.uk/newstudents and students.leeds.ac.uk/internationalwelcome

PREPARING FOR YOUR JOURNEY TO LEEDS

Remember that there's support to help you with preparing to travel to the UK, including immigration advice, what to bring, arrival, and current health and safety measures. For more information visit www.leeds.ac.uk/international www.leeds.ac.uk/linktoleeds

STARTING AT LEEDS

It's time to start preparing for your life at the University of Leeds. Your first few weeks will be full of new experiences. Don't worry if you haven't studied at a UK university before, there's lots of information to help you.

STARTING CHECKLIST

Now that you are ready to get started take a look at what you need to do next using this checklist.

Getting started	✓
Explore your online International Orientation (page 7)	
Use your Getting Started at Leeds resource (page 7)	
Get your IT username and password (page 8)	
Complete online registration (page 10)	
Pay academic fees (page 12)	
Enrol for optional and discovery modules, if necessary (page 14)	
Complete the online IT induction (page 8)	
Take part in your school induction activity (page 7)	
Complete your online library induction (page 9)	



KEY CONTACTS

INTERNATIONAL STUDENT OFFICE

Before you arrive in Leeds, the International Student Office is here to help you prepare. You can also get information to help you plan your travel and arrival and know what to expect when you get here.

www.leeds.ac.uk/international

TALK TO US




International Student Office
internationalwelcome@leeds.ac.uk

LINK TO LEEDS

You can speak to current students, ask questions and find out more about life at the University.

www.leeds.ac.uk/linktoleeds

CONNECT WITH US

   [universityofleeds](https://www.instagram.com/universityofleeds)

 [@UniversityLeeds](https://twitter.com/UniversityLeeds)

 [@LeedsGloCo](https://twitter.com/LeedsGloCo)

 [globalcommunityleeds](https://www.facebook.com/globalcommunityleeds)



WELCOME AND INDUCTION

Explore your online resources to help you get familiar with your new academic life. Take part in activities where you can meet people on your course and make new friends.

ONLINE INTERNATIONAL ORIENTATION

Your online international orientation has lots of information to help you get started. You can find this at students.leeds.ac.uk/orientation

GETTING STARTED AT LEEDS ONLINE RESOURCE

Getting Started at Leeds is our new online welcome and induction resource for taught students, helping to support you as you join our community and settle into university life. You can access this from 14 September 2020.

students.leeds.ac.uk/newstudents

SCHOOL INDUCTION

Your University school will send you information about its welcome and induction activities, giving you the opportunity to meet other students and staff and to get to know what you'll be doing in the weeks ahead. Everything you need to know about studying in your University school, including important contact details, is in your student handbook.

To access a copy, go to minerva.leeds.ac.uk and click the 'Learn' tab, then 'Organisations'.

NEW POSTGRADUATE RESEARCHER INDUCTION

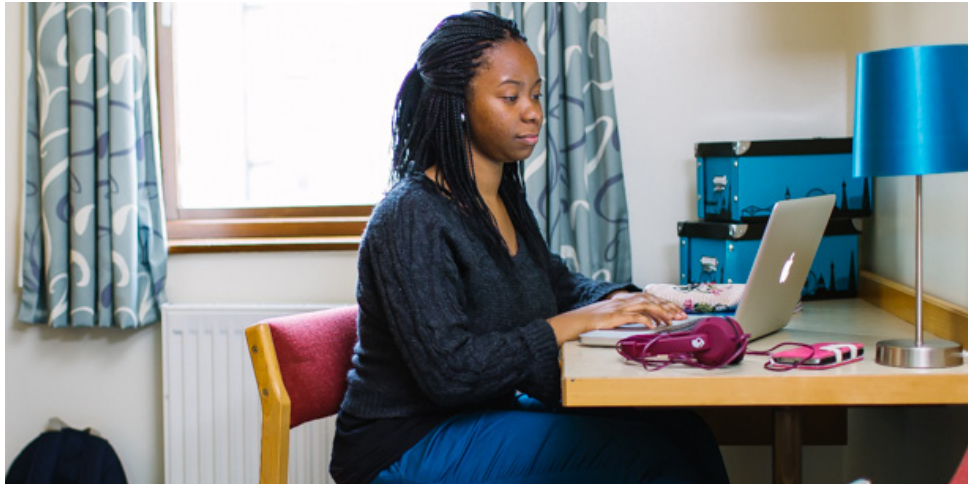
Find induction information for postgraduate researchers at students.leeds.ac.uk/researchinduction

WELCOME TO YOUR STUDENTS' UNION

Leeds University Union exists to make sure you love your time at Leeds. This includes supporting your academic achievement through academic societies and helping you meet people through a range of wellbeing activities clubs and societies.

Visit the Welcome and Freshers' experience website to understand what a union can offer you and how it can help you make the most of your time on campus.

welcome.luu.org.uk
www.luu.org.uk



STUDY RESOURCES

During your time at Leeds, you'll study and research independently. The University has all the support, resources and technology you will need.

COMPUTING AND IT

Go through the online IT induction so you know how things work from the start.

It won't take long to complete and covers essentials including:

- connecting to our wi-fi network
- accessing your email
- saving and printing your work
- computing on and off campus
- information on University systems such as Minerva (the University's student portal and virtual learning environment)

Complete your IT induction at itinductions.leeds.ac.uk/students

Download the free UniLeeds app. Once you have your University username and password, you'll be able to:

- access personalised content on your phone, get the latest University news and much more. it.leeds.ac.uk/mobileapps
- download your free copy of Microsoft Office at it.leeds.ac.uk/office

If you need any help, our experienced IT Service Desk staff are available to support you. You'll find the latest opening hours and more information online.

+44 (0) 113 343 3333
itservicedesk@leeds.ac.uk
it.leeds.ac.uk



THE LIBRARY

There are four main libraries on campus: the Laidlaw, Edward Boyle, Brotherton and Health Sciences. Each library will have socially distanced study spaces. There is a postgraduate-only Research Hub in the Edward Boyle Library. Take a tour of our libraries with 360-degree photography at library.leeds.ac.uk/inside

Our libraries are open seven days a week during term time, with a variety of opening times to suit your needs. Library staff are available online during office hours, providing information and advice, as well as academic skills support. You'll need your student card to access library buildings and your university username and password to access online resources.

Find out more about Library resources, services, and support at library.leeds.ac.uk

Get started with the library induction at library.leeds.ac.uk/quickstart

SKILLS@LIBRARY

The Skills@Library team can help you develop the academic skills you need to succeed.

Flying Start introduces you to university study and provides support with key academic skills resources.library.leeds.ac.uk/flyingstart

Step up to Masters explores the academic expectations here at Leeds, and offers support in making the step up to Masters-level study resources.library.leeds.ac.uk/step-up-to-masters

Book onto a workshop about topics such as critical thinking, writing skills and time management, or use online resources to develop your academic skills at a time and pace that suits you. You can also book a one-to-one appointment with a learning advisor for help with academic skills, maths and statistics.

library.leeds.ac.uk/skills

ENGLISH LANGUAGE SUPPORT

We offer workshops and consultations that you can fit around your studies, to help you develop your academic English language skills once you've started your degree.

www.leeds.ac.uk/language-support

The Language Zone runs regular activities for learners of English, such as Conversation Club and Let's Chat, where you can practise your speaking skills and meet other students.

You can also sign up for a language exchange or meet other language learners on our Microsoft Team, 'Language Zone Activities'. www.leeds.ac.uk/languagezone



ONLINE REGISTRATION

All students at the University need to complete registration. Your timetable will be produced when you start the registration process and you'll also be able to sign up for Leeds University Union membership.

Once you've registered, you can start your studies or research, attend lectures and seminars, and use the library and computer facilities. You'll also be able to collect your student card once you are in Leeds. You may need to provide proof of your academic qualifications too, so ensure that you bring these with you to Leeds, and official translations, if required.



Undergraduate international students can start registration from 2 September 2020.

Postgraduate students can begin their registration from August 2020.
students.leeds.ac.uk/registration

STEP-BY-STEP GUIDE TO REGISTRATION

STEP 1


Read about registration and find out what you need to register at students.leeds.ac.uk/registration

STEP 2

Go to mypassword.leeds.ac.uk and enter your student number and date of birth to get your University username and temporary password. You'll find your student number on the emails you've received from us. You'll need to change this temporary password to create a permanent one before you can access any University systems. It's easier if you do this now by following the on-screen instructions and registering with the Self-Service Password Reset (SSPR) facility.

STEP 3

To start registration go to minerva.leeds.ac.uk (our student portal and virtual learning environment). Log in using your University username and new password.

Click  in the top right and log in to Student Services, then click 'Registration' and follow the on-screen instructions. If you can't start registration, the reason for this will be explained. Just follow the instructions on the screen. You will still be able to enrol on your modules. When you have completed online registration, you'll get a registration certificate, which you can save or access later if you need it.



STEP 4

When you arrive in Leeds, we need to check your identity to complete your registration (see page 37). If you have any problems registering, contact our Student Information Helpline. You'll find contact details and the latest opening hours at students.leeds.ac.uk/registration

YOUR FEES

Your tuition fee was confirmed in your offer letter from us. As part of the online registration process, you'll need to confirm how many fees will be paid.

If you are on a pre-session course with the Language Centre, check how you'll pay your fees at www.leeds.ac.uk/languagecentre

All other students should choose one of the following payment options. When you make a payment or payment arrangement keep your confirmation email for future reference. Read more about payment options at students.leeds.ac.uk/feescharges

PAYMENT BY FLYWIRE

Flywire (bank transfer) is a payment method which allows you to make simple payments to the University in a range of currencies.

Do not use cash or bank draft as a payment method. Do not use third-party agents to transfer payments to the University of Leeds, as this significantly increases your risk of being exposed to financial crime.

PAYMENT IN FULL

To make your payment by card or Flywire (bank transfer) go to students.leeds.ac.uk/waystopay

PAYMENT IN INSTALMENTS

If you choose to pay in two instalments, you'll need to pay half of your tuition fee before you register, then set up an agreement to pay the second half of your fees by direct debit from a UK bank account later in the year.

To pay the first instalment online, by card or by Flywire (bank transfer), go to students.leeds.ac.uk/waystopay

When your UK bank account is open, you'll need to enter the account details to arrange payment of your second instalment by direct debit.

A direct debit allows a third party to transfer money from your bank account on agreed dates through an agreement with the bank.

Read more at students.leeds.ac.uk/bankaccounts

SPONSORED STUDENTS

If a third-party organisation is paying your fees, you'll need to provide our Student Fees team with an official letter from your sponsor. Read more at students.leeds.ac.uk/sponsoredstudents

If you have part sponsorship which doesn't cover your full fees, you'll need to arrange payment of the remaining amount by card or Flywire (bank transfer), as above. students.leeds.ac.uk/sponsoredstudents

SHARING YOUR INFORMATION

We can only discuss your fees and payments with you, not with anyone else, unless you give us permission to speak to another specified person. Find out how to do this at students.leeds.ac.uk/contactonyourbehalf



MODULE ENROLMENT

You may need to select the modules that will make up your programme of study.

Find out about the different types of modules and whether this applies to you at students.leeds.ac.uk/modules

FULL-TIME UNDERGRADUATE AND TAUGHT POSTGRADUATE STUDENTS

Once you have your University username and password, you can start building your timetable by enrolling on your course modules. Remember to refer to the pre-arrival information your University school sent to you. If you need any help, you'll be able to contact your school directly via students.leeds.ac.uk/enrolcontact

Your course is made up of modules. Each module is worth a number of credits that contribute towards your degree. You'll automatically be enrolled for any compulsory modules you must take as part of your course, so you only need to enrol for optional and discovery modules.

OPTIONAL MODULES

You may have to take a certain number of optional modules linked to your course, but you'll be able to choose these.



DISCOVERY MODULES

Most of our full-time undergraduate courses give you the opportunity to choose discovery modules. They're a great way to tailor your study around interests not related to your course. The discovery modules available to you will depend on your timetable. Our discovery modules are based around 10 discovery themes which you can explore at leedsforlife.leeds.ac.uk/broadening

Some taught postgraduate courses also allow you to choose elective modules not related to your course, so you can develop your interests and career goals, or try something completely new.

Undergraduate international students can start module enrolment from 2 September 2020. Postgraduate enrolment dates are at students.leeds.ac.uk/whentoenrol

STEP-BY-STEP GUIDE TO MODULE ENROLMENT

Step 1

Familiarise yourself with module enrolment at students.leeds.ac.uk/modules

Step 2

Refer to any pre-arrival information your University school sent you. You can contact the school directly if you need any help or advice choosing your modules.

Step 3

When you're ready to enrol on your modules, go to students.leeds.ac.uk/howtoenrol and follow the on-screen instructions.

Step 4

Once logged in, you'll be able to view your compulsory modules and check your personal timetable. You can then choose optional and discovery modules, if applicable. Check the timetable for these modules against your personal timetable, to make sure they are not at the same time.


Step 5

Once you've made your selection, view and confirm your module choices. A confirmation email will be sent to your University email address and you should keep this for reference.

STUDENTS WHO DON'T ENROL ONLINE

Postgraduate researchers, Language Centre and International Foundation Year students don't complete module enrolment online.

If you're a Study Abroad, Exchange or Erasmus+ student, you can't enrol for modules online. If you want to add or drop a module, you must contact the Study Abroad Coordinator in the academic school or department that teaches the module. Read more at www.leeds.ac.uk/incomingmodulechanges

Access your University emails by going to minerva.leeds.ac.uk then clicking the  in the top right.

LIFE AT LEEDS

Studying at the University of Leeds may be different to what you're used to. Don't worry, there are lots of ways we can support you during your time with us.



ACTIVITIES AND OPPORTUNITIES

Your experience as a University of Leeds student will involve much more than your academic studies. This section highlights some of the opportunities available.

LEEDS UNIVERSITY UNION

We hope you've already heard lots of great things about Leeds University Union (LUU), your award-winning students' union right at the heart of campus.

LUU's mission is to help you love your time at Leeds. You can join for free during online registration (see page 10). Membership includes things like confidential advice, student-focused representation, and lots of social and wellbeing activities.

Although your Freshers' experience will be different this year as a result of social distancing, Leeds University Union's events and activities are here for you from the start of your University experience. Watch LUU's welcome talks and find out more about your Welcome and Freshers' experience at welcome.luu.org.uk

There are over 300 student-led sports clubs, faith and culture groups, volunteering and special interest societies you can choose from. They're a great way to meet new friends and socialise with your flatmates and people on your course. Read more at luu.org.uk

If you want to find out which might suit you, try LUU's 60-second quiz at findyourfit.luu.org.uk

 [/leedsuniversityunion](https://www.facebook.com/leedsuniversityunion)

 [@LeedsUniUnion](https://twitter.com/LeedsUniUnion)

 [@leedsuniunion](https://www.instagram.com/leedsuniunion)



SPORT AND PHYSICAL ACTIVITY

All our facilities, across campus and the city, will be reopened safely, in line with government guidelines. They'll provide a safe COVID-secure environment with staff trained to give the best possible student experience.

If you're staying in University accommodation, you'll automatically get gym and sports membership (Edge Club membership) included in your residence fees. If you are not staying in University accommodation there are a variety of membership options to suit you. Find out more at sport.leeds.ac.uk/student-membership

More information will be available from September about our sports facilities. We'll let you know about our welcome activities and the COVID-19 safety measures that will be in place to help keep you safe. sport.leeds.ac.uk/the-edge

There are over 90 clubs and societies that are about being physically active. They welcome all abilities and are a great way to meet new people. luu.org.uk

Beyond your health and wellbeing, getting involved in sport also gives you the opportunity to compete in the British Universities and Colleges Sport (BUCS) leagues. sport.leeds.ac.uk

 [/theedge.leeds](https://www.facebook.com/theedge.leeds)

 [@TheEdgeLeeds](https://twitter.com/TheEdgeLeeds)

 [@Theedgeleeds](https://www.instagram.com/Theedgeleeds)

POSTGRADUATE EVENTS

There are various dedicated student societies for postgraduates, and activities for partners and families. Leeds Doctoral College also supports postgraduate researchers with training and events.

luu.org.uk/representation/postgraduates-pg

 [/LeedsDoctoralCollege](https://www.facebook.com/LeedsDoctoralCollege)

 [@LeedsDocCollege](https://twitter.com/LeedsDocCollege)

HALLS SOCIAL PROGRAMME

If you are coming to live in a University hall of residence, you can access many events that are run by the Residence Life team. These will be a mix of virtual activities (which you can get involved in regardless of your start date in Leeds) and in-person events. You can keep up-to-date with all activities happening in residences as they are announced on Facebook.

 [/UOLResLife](https://www.facebook.com/UOLResLife)

GET OUT, GET ACTIVE

Our Get Out, Get Active programme gives you the chance to try out a range of fun and sociable healthy activities, both on campus and in the stunning local countryside. This programme is great for making friends and boosting your wellbeing.

There are beginner sessions to get you started with no commitment and at a low cost.

Find out about all the activities on offer at

www.leeds.ac.uk/getoutgetactive

 [/gogaleeds](https://www.facebook.com/gogaleeds)

 [@gogaleeds](https://www.instagram.com/gogaleeds)

GLOBAL COMMUNITY ACTIVITIES

Global Community connects you to intercultural activities and opportunities to get to know people who can bring you a world of different ideas and experiences. Check our webpage and social media to find out what's happening.

www.leeds.ac.uk/globalcommunity

 [/globalcommunityleeds](https://www.facebook.com/globalcommunityleeds)

 [@LeedsGloCo](https://twitter.com/LeedsGloCo)

LANGUAGE ZONE

You can access resources and advice to support your language learning from the Language Zone, our study and resource centre for languages. The team is available online, offering many opportunities for language learning activities and advice drop-ins to help you study.

www.leeds.ac.uk/languagezone

UNITY

Unity highlights our shared values and commitment to the inclusivity of our community at the University, through email updates and events. Connect with our friendly community of students, staff, chaplains and volunteers throughout the year. Find out more at students.leeds.ac.uk/unity

 [/UnityEventsLeeds](https://www.facebook.com/UnityEventsLeeds)

THE BUSINESS CONFUCIUS INSTITUTE (BCI)

The BCI is dedicated to teaching Mandarin and educating the community about China. Everyone who's interested in finding out more about China is welcome to attend BCI events and classes.

If you're a Chinese student who would like to share your culture, you can volunteer at events, gain experience and make friends.

confucius.leeds.ac.uk

 [/BCIUL](https://www.facebook.com/BCIUL)

 [@LeedsConfucius](https://twitter.com/LeedsConfucius)

ESN (ERASMUS STUDENT NETWORK) LEEDS SOCIETY

This society provides support to all international and Erasmus exchange students throughout their British university experience. Meet people from all over the world by taking part in a variety of activities.

bit.ly/LUUErasmus

 [/ESNLeeds](https://www.facebook.com/ESNLeeds)



PERSONAL AND PROFESSIONAL DEVELOPMENT


Take advantage of lots of opportunities and resources at the University to help your career.

CAREER PLANNING

The Careers Centre supports you with all aspects of planning your next steps, including personal development, decisions about career path, finding opportunities and application and interview support. In response to the COVID-19 pandemic, some of these experiences may be offered in person or online, depending on the government guidelines and travel restrictions in place at the time.

You may be interested in the employment and experience opportunities we advertise.

careerweb.leeds.ac.uk

 /LeedsUniCareers

 @TheEdgeLeedsLeedsUniCareers

 @LeedsUniCareers

LEEDS UNIVERSITY UNION JOBLINK

Leeds University Union's Joblink service can help you find student-friendly employers. Find out more at luu.org.uk/jobs

WORKING


Work experience provides a great opportunity for you to gain an insight into UK workplace culture, develop your language skills, and help with your career planning and decision making. Students take up work in a range of organisations from small companies, to multi-nationals as well as working with charities in a wide variety of roles. The Careers Centre can support you in finding and applying for work experience opportunities. Find out more at students.leeds.ac.uk/workingduringstudy



VOLUNTEERING

Volunteering is a fun way to give something back to the local community, develop skills and meet people. Whether you have a few hours to spare or can commit to a weekly role, there will be something to suit you and your interests. You could support young people in local schools, get involved in a Leeds University Union volunteering society, or help with one of the University's own sustainability projects. There are lots of opportunities available across Leeds with over 160 different charities and community organisations.

www.luu.org.uk/volunteering

 @LeedsVolunteer

PERMISSION TO WORK IN THE UK

Before you apply for any paid or unpaid (voluntary) work, it's essential that you check whether you have permission to work in the UK and any restrictions on working which apply to you.

Unpaid/voluntary work counts towards your weekly limit during term time. Volunteering means doing occasional work for a charity and this is not restricted. Find out more at students.leeds.ac.uk/workingduringstudy

You must comply with the terms and conditions of your UK visa. Check the UKVI guidance on working for the type of UK visa that you hold. Find out more at ukcisa.org.uk/Information--Advice/Working/Tier-4-work

POSTGRADUATE RESEARCHERS

Postgraduate researchers should also be aware that University regulations restrict you to 250 hours of paid work per 12-month session. Check the Postgraduate Researcher Handbook at students.leeds.ac.uk/researchstudentguidance



SUPPORT AND WELLBEING

It's normal to feel a little nervous about starting university in a new country, especially in the current unprecedented circumstances. Just remember lots of students are having a similar experience, and we're here to help whenever you need us.

The University has a network of support and pastoral care to help you make the most of your time here and to help you through any difficulties. Our services will work together to ensure any problems are dealt with as quickly and efficiently as possible, no matter what the problem is. Find out about our support services students.leeds.ac.uk/supportandwellbeing

YOUR SCHOOL

Contact staff in your University school office and your personal tutor/supervisor for support with your academic programme and any personal issues affecting your studies.

You'll have regular and structured meetings with your personal tutor/supervisor, who will play an important role in supporting your academic and personal development, as well as providing advice on other aspects of your life at the University. Your school induction will explain more about how staff in your school can support you during your time at Leeds.

SUPPORT SERVICES

The Student Education Service brings together support and information services with opportunities for students. students.leeds.ac.uk

The Student Services Centre can help with a range of enquiries such as accommodation, fees, registration and student cards. Many of these services are available remotely. Check details at students.leeds.ac.uk/contacts

LEEDS UNIVERSITY UNION ADVICE

Professional, confidential help and advice is available from Leeds University Union Advice. You can get advice on housing and money issues, academic procedures and many other aspects of student life. Their help is free and completely independent of the University.

Leeds University Union
+44 (0) 113 380 1420
advice@luu.leeds.ac.uk
luu.org.uk/student-advice

 @LUUAdvice

STUDENT COUNSELLING, WELLBEING AND MENTAL HEALTH SUPPORT

We recognise that there may be times when stress, emotional problems or upsetting life events make it hard to cope academically or personally. We also understand that the COVID-19 pandemic will have an impact on many different aspects of your life. We're here to support you through these difficult times.

All our support services remain open and are currently being offered online. You can access free professional and confidential counselling, wellbeing and mental health support through groups, workshops, single-session consultations, brief counselling and web-based self-help resources such as [togetherall](https://togetherall.org.uk). If you need longer-term support or treatment, we'll help you find the most appropriate NHS or voluntary sector services.

If you have an existing mental health diagnosis, we can provide one-to-one support, develop an appropriate support plan, or liaise with external referral agencies.

For the latest information about our support arrangements, including the availability of face-to-face support, visit students.leeds.ac.uk/supportandwellbeing

Leeds University Union engages students in making positive decisions about their health and wellbeing. A team of student ambassadors works with representatives in schools to offer activities for students, such as monthly wellbeing meetups, self-defence classes and stress management workshops. www.luu.org.uk

CHAPLAINCY

Our chaplains are experienced at listening and offering support to students. They are good to talk to whether faith is a large part of your life or not at all. You can arrange to speak confidentially to a chaplain or find out about our groups and activities (which are open to students of all faiths and world views).

Emmanuel Centre
+44 (0) 113 343 5071
chaplaincy@leeds.ac.uk
www.chaplaincy.leeds.ac.uk

FAITH, PRAYER AND WORSHIP

If you practise a faith, you'll find spaces and communities for your faith in Leeds.

You can find support and information related to your faith from the chaplaincies and Leeds University Union student faith societies. Read more at students.leeds.ac.uk/prayercontemplationfaithsupport

luu.org.uk/clubs-and-societies/faith

SUPPORT FOR DISABLED STUDENTS

The University's Disability Services offers information, advice and support to students who:

- have a specific learning difficulty (for example, dyslexia or ADHD)
- are deaf or hard of hearing
- are blind or partially sighted
- have a physical or mobility impairment
- have a long-term medical condition
- have a mental health condition
- have an autism spectrum condition (for example, Asperger syndrome)
- have a combination of these

If this applies to you, contact Disability Services as soon as possible, even if you're not sure whether you'll need support.

They can discuss your situation with you and answer any questions you have about possible support, make you aware of any options open to you and help you to access other University support and resources.

students.leeds.ac.uk/disabledinternationalstudents

For students who require more specialist support, such as one-to-one mentoring, sign language interpreters, text transcription (including Braille), specialist equipment or software, the process of getting the right support in place can take several weeks, so it's important you apply for this as soon as possible. To access support, you'll need to have current evidence of your disability and complete an online sign-up form at students.leeds.ac.uk/settingupyoursupport

Contact Disability Services on
+44 (0) 113 343 3927
disability@leeds.ac.uk

 [@UoLDisability](https://twitter.com/UoLDisability)



IMMIGRATION ADVICE

Get in contact as soon as possible if you have a question about immigration or your visa. Our friendly team is here to help with your queries about UK visas or immigration rules.

Our immigration advisors can give you free immigration advice, when you are applying for your visa or looking for a visa extension.

students.leeds.ac.uk/immigration
internationalstudents@leeds.ac.uk

Immigration rules and processes change often so it's important to get the correct advice. Our Immigration Advice Service is the only service at the University that can give you immigration advice. Staff in your University school or elsewhere in the University can't advise you about immigration. Always check with us if you have questions about your visa or need help with your immigration status.

WORKING AND VOLUNTEERING DURING STUDY

Check either your visa sticker in your passport or Biometric Residence Permit to see if you are allowed to work. If you're not sure, check with the immigration advice team.

students.leeds.ac.uk/working

INVITING FAMILY AND FRIENDS

If you want to invite your family or friends to visit you in the UK, find information at students.leeds.ac.uk/visits



KEEPING THE UNIVERSITY INFORMED

If you applied for your visa using a Confirmation of Acceptance for Studies (CAS) the University must, by law, report periods of unexplained absence to the Home Office. It's very important to talk to your tutor or supervisor if you're going to miss part of your course. To notify the University if you have been ill and missed classes, follow the instructions at students.leeds.ac.uk/attendance

Check with our immigration advisers if you want to do a work placement or a period of study abroad. You should also get advice if you make a change to your course or studies, for example if you need to take re-sit exams or withdraw from your course.



FINDING ACCOMMODATION

Get support and reliable information to find your new home in Leeds.

UNIVERSITY ACCOMMODATION

Contact Accommodation Services to find out more about University accommodation and whether there is a room available for you. Even if you don't qualify for our accommodation guarantee, the University may be able to offer you a place.

accom@leeds.ac.uk
accommodation.leeds.ac.uk

PRIVATE-SECTOR ACCOMMODATION

If you prefer to live in private-sector accommodation, help and advice is available from Student Advice, run by our students' union, or from Unipol, a student housing charity that works closely with the University.



STUDENT ADVICE

Leeds University Union's Advice team can offer help and support if you have any difficulties finding suitable accommodation. They also offer a service to check your accommodation contract. We strongly recommend getting your contract checked before you sign.

luu.org.uk/student-advice

UNIPOL STUDENT HOMES

Unipol provides lots of useful information and advice on finding accommodation. You can search for everything, from a room in a shared student house to a flat or studio apartment to rent. They can also advise on family accommodation. Unipol's accreditation team checks the standards in student accommodation to ensure you get the best possible quality student home.

Speak to the friendly Unipol team in office hours via webchat. Just go online and wait for the invite to chat at www.unipol.org.uk/leeds



You can also take advantage of the Unipol 'personal shopping' house-hunting service. Complete the online form with your preferences and let Unipol do the hard work for you.

www.unipol.org.uk/advice/students/leeds-house-hunting-checklist

Unipol Housing Hub
+44 (0) 113 243 0169
info@unipol.org.uk

BEFORE YOU SIGN A CONTRACT

If you're planning to rent private-sector accommodation, it's essential to check several things before you sign a contract. Once it is signed you cannot usually cancel and will be legally bound to pay rent until the end of the contract, even if you move out before.

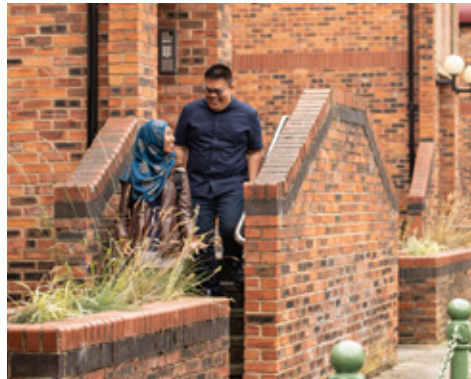
Make sure you visit the property, calculate all your costs and get your accommodation contract checked by Student Advice or Unipol before you sign it. Never pay a landlord any money before you sign the contract. Get more information and advice at luu.org.uk/student-advice

www.unipol.org.uk/advice/students/known-your-rights

Find out about other students' experiences by searching the address you're interested in or the landlord you're thinking of signing with. You can do this at rateyourlandlord.org.uk

AFTER YOU MOVE IN

Once you've collected your keys and you're inside the property, check it thoroughly and consider how it compares to when you signed the contract. Take photos of the property (including any wear and tear) so you have proof of its condition and make a note of the meter readings. Contact the landlord or letting agency straight away about any concerns, such as missing or damaged items. If there's a burglar alarm, get the code from the landlord so you can use it. Find out more about living locally and being a Leeds resident at sustainability.leeds.ac.uk/your-community



LIVING IN YOUR ACCOMMODATION

UNIVERSITY ACCOMMODATION

We're all more mindful of our own personal safety and the safety of those around us at the moment. Be assured, we're taking steps in response to COVID-19 to create an environment where you feel confident, relaxed and safe.

We're introducing a staggered and contactless arrivals process, as well as effective social distancing measures, so you'll be able to meet new people and socialise in a safe way. All our residences will be cleaned often, and hand sanitiser will be provided for you to use. Our experienced accommodation team will also be available to help you. For the latest updates, visit accommodation.leeds.ac.uk

Before arriving in Leeds, you should have completed our online accommodation induction and booked a time slot to arrive at your residence, so you can move in safely. Shortly before you arrive, we'll email you with more details on the check-in process and how to get to your residence. It will include information about the COVID-19 safety measures that will be in place on arrival, so make sure you read this carefully.

In University halls there is always a member of staff you can contact 24 hours a day if you need help. Your Residence Manager can help with problems like repairs to your room or if you need to collect post. You can also get advice and support from our dedicated Residence Life team. University halls offer a safe environment, with Security Services on call 24/7. Find out how to contact your Residence Manager, Residence Life Warden, Residence Life Assistants and Security Services at accommodation.leeds.ac.uk/residence-contacts



PRIVATE-SECTOR ACCOMMODATION

Your first point of contact for any issues with your private accommodation is your landlord or letting agent. You can contact Unipol for independent advice and to see if your landlord is accredited under the Unipol Code at www.unipol.org.uk/landlords/directory

You can also visit Student Advice in Leeds University Union for help with a wide range of housing topics including negotiating with landlords and issues with your housemates or property.

If you have questions about living in private accommodation during the COVID-19 pandemic, there's lots of help available. The students' union and Unipol offer free, independent advice on all aspects of living in private accommodation. luu.org.uk/student-advice
unipol.org/leeds

COUNCIL TAX

Council Tax is a charge the local council makes for services it provides. Full-time students on courses over 24 weeks are normally exempt from paying, but others may be charged. students.leeds.ac.uk/counciltax

Check if you're exempt, or entitled to a discount at www.leeds.gov.uk/council-tax/discounts-and-exemptions/students

If you're unsure, get advice from Student Advice as soon as possible. luu.org.uk/student-advice

TV LICENSING

If you plan to watch on-demand or live TV, using your own TV or any other device, you may need to buy a TV licence. If you watch TV without a licence you could be fined. Find more at www.tvlicensing.co.uk/students



FAMILIES AND CHILDREN

Leeds prides itself on being a child-friendly city and offers plenty of attractions and opportunities for couples and families to enjoy.

If you come to Leeds with your family, check our information about the UK school system, childcare and family-friendly activities, and our policy on support for student parents. You can also find information about support for pregnant students, spouses and partners at students.leeds.ac.uk/internationalfamilies

For information on what parents and carers need to know about childcare, schools and colleges during the coronavirus (COVID-19) outbreak, visit www.gov.uk/coronavirus/education-and-childcare

SCHOOLS

All children between the ages of five and 16 who are in the UK must attend school. Once your child has arrived in Leeds, contact Leeds City Council to find out how to apply for a free school place. If your child is aged between 16 and 19, they can attend a local adult education centre or college but may have to pay fees. www.leeds.gov.uk/schools-and-education

CHILDCARE

In the UK childcare can be quite expensive so you'll need to budget for this. Get information about childminders, nurseries, playgroups, out-of-school play schemes and after-school clubs at familyinformation.leeds.gov.uk

CHILDCARE ON CAMPUS

Bright Beginnings Childcare Centre offers a range of services for students, including childcare for children between the ages of three months and five years (pre-school) and a playscheme during school holidays for children aged between three and 11 years.

The award-winning Centre, based on campus, is registered with Ofsted and complies with the early years foundation stage, so you can be sure your child will have the very best of care. **+44 (0) 113 343 1818**
www.brightbeginningschildcare.co.uk

FAMILY ACTIVITIES

There are events and activities on campus and in the local area for you and your family. The University and Leeds University Union run events open to families. You can also find community groups, classes and leisure activities in Leeds. students.leeds.ac.uk/familyactivities

ARRIVING IN LEEDS

Find your way around and start settling into life in Leeds.

ARRIVAL CHECKLIST

When you've arrived and are ready to settle in, take a look at what you need to do next using this checklist.

Your first few weeks	✓
Explore your online International Orientation (page 35)	
Use your Getting started in Leeds online resource (page 7)	
Complete your identity check and collect your Student Card (page 37)	
Collect your Biometric Residence Permit, if required (page 36)	
Register with the police if this is a requirement of your visa (page 37)	
Open a UK bank account, if you want to (page 41)	
Register with a doctor in Leeds (page 38)	
Find your way around the campus and city centre. Use the guide to our campus and the city at www.leeds.ac.uk/campusmap (page 44)	



CONTACT POINTS

When you first arrive in Leeds you may have several questions to help you get settled in. The following contact points should help you to get the answers that you need.

YOUR SCHOOL

Your University school is a key point of contact via email for questions related to your programme.

www.leeds.ac.uk/faculty

STUDENT INFORMATION

You'll find lots of information about what you need to do in your first few weeks on our webpages. If you can't find what you need, you can email us with any questions.

students.leeds.ac.uk/newstudents
studentinfo@leeds.ac.uk

Our Student Information Helpline can also help with many questions. For more information visit

students.leeds.ac.uk/informationpoints

At our Student Information Points across campus our friendly staff can help you with a range of enquiries or direct you to the right help. You can find more details, including where they're located, opening hours and the support available at

students.leeds.ac.uk/informationpoints



INTERNATIONAL STUDENT INFORMATION

The International Student Office is here to help you settle in and answer your questions related to being an international student in Leeds.

You can email us at:

General international queries
internationalwelcome@leeds.ac.uk

Immigration advice
internationalstudents@leeds.ac.uk

ASK A STUDENT – LINK TO LEEDS

Our welcoming student team can answer questions about life at Leeds and introduce you to activities where you can meet other students and get to know more about Leeds.

You can chat to them online at

www.leeds.ac.uk/linktoleeds

ONLINE INTERNATIONAL ORIENTATION

In your first few days your international orientation will give you important information and inspiration to help you make the most of your time in the UK. Find your online international orientation at

students.leeds.ac.uk/orientation

STUDY ABROAD, EXCHANGE AND ERASMUS+ ORIENTATION SESSION

If you're a Study Abroad, Exchange or Erasmus+ student you must attend the Study Abroad Orientation session, where you will get essential information about your time in Leeds.

The Orientation session will be a virtual session run on

Friday 18 September 2020
11.00am–12.30pm UK time

The session will be recorded for anyone who is unable to attend the live session.

Study Abroad coordinators will also arrange a time for you to attend a school induction meeting. Check your University of Leeds email in September for details on which session you should attend and for the date and time of your school welcome meeting.



IMPORTANT TASKS ONCE YOU'VE ARRIVED IN LEEDS

CHECK YOUR ADDRESS RECORD

Once you've arrived in Leeds, make sure that your term-time address is correct on your student record. If you were not in Leeds when you completed your online registration you must now update your record to your new term-time address. You can change this on Minerva (the University's student portal and virtual learning environment). Find out how at www.students.leeds.ac.uk/changename

COLLECT YOUR BIOMETRIC RESIDENCE PERMIT

If you have a Tier 4 (General) student visa or a short-term study visa and are attending a course for six months or longer, you'll need to collect your Biometric Residence Permit (BRP) when you arrive in Leeds. This is the visa that covers the full duration of your course. If you provided the University of Leeds Alternative Collection Location (ACL) code in your immigration application, the University will manage the distribution of your BRP. When your BRP is ready, we'll email you to explain what you need to do and where you need to go. Wait for this email before taking any further action on your BRP.

If you provided a Leeds postcode in your immigration application instead of the ACL code, you'll need to collect your BRP from a post office or library in Leeds. For more details, check the UKVI decision letter you received when your visa was issued. If you need any further information on collecting or receiving your BRP visit students.leeds.ac.uk/brpcollection



To complete your ID check you will need:

- your passport
- your visa/immigration permission (if applicable)
- a document with your student number on it, like your registration certificate or offer letter
- Once you've completed your identity check, you'll find information about getting your student card at www.students.leeds.ac.uk/studentcard

If you need any help, contact our student information helpline. You'll find contact details and the latest opening hours at students.leeds.ac.uk/registration

It is very important that you complete registration. The University must report to the government any international students who do not complete the registration process.

REGISTER WITH THE POLICE

If your visa, BRP or decision letter tells you to register with the police, you can find out more at students.leeds.ac.uk/police-registration

IDENTITY CHECK AND STUDENT CARD

We check your identity as part of registration. Find out more at

www.students.leeds.ac.uk/idcheck

HEALTH ADVICE

PERSONAL SAFETY

Washable face coverings will be provided, and you'll be able to access free and fast COVID-19 testing on campus, to support the NHS Test and Trace service. Hand sanitiser, soap and paper towels will also be available for you to use and you'll notice lots of cleaning activity across campus. You'll receive more safety guidance as part of your induction, including advice about when you need to wear face coverings.

[coronavirus.leeds.ac.uk/safety-for-students](https://www.leeds.ac.uk/safety-for-students-coronavirus)

We can all help to keep each other safe by following government guidelines on social distancing and incorporating the safety measures into our everyday lives. Get the latest updates at www.gov.uk/coronavirus

Find out how Leeds City Council is managing COVID-19 locally at www.leeds.gov.uk/coronavirus/managing-coronavirus-in-leeds

For everyone's health and wellbeing we're creating a smoke-free campus
students.leeds.ac.uk/smokefree

ACCESSING HEALTHCARE

There are various places you can access healthcare, depending on your needs.

Register with a doctor/general practitioner (GP) in Leeds

Register with a doctor in Leeds soon after you arrive. Don't wait until you need medical treatment. If you're living in University accommodation or private-sector accommodation in the student areas of Leeds you'll be eligible to join the Leeds Student Medical Practice, close to the University campus. Register online or request a registration pack at www.leedsstudentmedicalpractice.co.uk/join

You can also find a local NHS doctor or dentist and find out more about NHS services at students.leeds.ac.uk/healthcare

Contact your doctor (GP) for non-emergency medical treatment.

24-hour telephone health advice

For health advice at any time of the day or night, call the National Health Service (NHS) by dialling 111. If you're not sure which healthcare service to use, call 111 to discuss the options with an adviser. They will ask you a series of questions to assess your symptoms and immediately direct you to the best medical care for you.

The NHS App is a simple and secure way to access a range of NHS services on your smartphone or tablet.

www.nhs.uk/using-the-nhs/nhs-services/the-nhs-app/

Pharmacies

If you have a minor health problem, such as a cold, sore throat or dry skin, you can visit a pharmacy to get advice and buy medication.

If your local pharmacy is closed, you can buy medication every day of the week until midnight at Boots Pharmacy in Leeds train station.

+44 (0) 113 242 1713

If you take regular medication you may need a doctor in Leeds to prescribe this for you when you are living in Leeds. Bring a letter from your current doctor with information about your medication and details about your health, to your first medical appointment in Leeds.

Hospital – Accident and Emergency (A&E) department

You should only visit a hospital if you need emergency care or if your GP refers you for specialist treatment. An emergency is a life-threatening condition, such as loss of consciousness, severe chest pain, breathing difficulties or severe bleeding. The nearest A&E department to campus is **Leeds General Infirmary (LGI) Jubilee Wing, Clarendon Way +44 (0) 113 243 2799**

To call an ambulance

Ambulance services help with serious or life-threatening conditions. You can make a free call from any phone to the emergency services by dialling **999**. If you're on campus you should also call University Security on **+44 (0) 113 343 2222**

Will I have to pay for healthcare?

In England, you're entitled to receive NHS primary care medical services at a GP surgery and emergency care in an Accident and Emergency (A&E) department without charge.

Prescribed medication costs a set NHS rate per item, currently £9.15, which you pay at the pharmacy when you collect your prescription.

If you're going to be in the UK for more than six months and have a visa, you will have paid the Immigration Health Surcharge (IHS), so you won't be charged if you are referred to hospital for further tests or treatment. Keep a note of your IHS reference number in case you need it.

If you're going to be in the UK for less than six months, you won't have paid the IHS.

This means you'll only get a limited number of services free and you will need to pay for any hospital treatment. These costs can be very high, so you are advised to arrange medical insurance. Some countries have a reciprocal health agreement with the UK. If this applies to you, check the details carefully.

You may decide to take out insurance to cover medical related costs, even if you are entitled to free NHS treatment. Insurance can offer additional benefits, such as covering the cost of lost fees if you are unable to finish your course for medical reasons, or the cost of returning to your home country for treatment, or if a family member is severely ill. It may also give you access to private treatment, avoiding NHS waiting lists, which can be very long. Find out more at www.ukcisa.org.uk/Information--Advice/Studying--living-in-the-UK/Health-and-healthcare#layer-5179

Meningitis vaccinations

You should ensure that you've been vaccinated against meningitis (MenACWY vaccine) and measles, mumps and rubella (MMR vaccine). You might have had an MMR vaccination as a young child, but you need to ensure that you've had two doses.

If you haven't had these vaccinations at home, you should arrange to get them as soon as possible after arriving in Leeds.

Check with your doctor to find out if you are eligible to receive the vaccine.

For more information, visit students.leeds.ac.uk/internationalstudentshealth

KEEPING SAFE

Leeds is a great place to live, but like all big cities it has some crime.

The situation in the UK may be different to what you are used to at home, so it's important to find out and follow the usual UK crime-prevention precautions.

There is a dedicated security service that works 24/7, 365 days a year, patrolling all University property and monitoring campus CCTV to help keep you safe. Our Security team has been awarded Police Certified Secured Environment Accreditation, which recognises the University as a safe and secure environment.

Top safety tips:

- Stay on well-lit busy streets and avoid walking home alone after dark
- Lock windows and doors at all times, especially when you leave the house
- Don't leave valuables unattended, even for a few minutes

If you have any safety questions, or in the unlikely event that you're a victim of crime, there is lots of support available to you. You'll receive more safety advice during your orientation and induction sessions.

[students.leeds.ac.uk/safety](http://www.students.leeds.ac.uk/safety)

WHO TO CONTACT

If you're on the University campus or in University accommodation, contact the University's Security Office in an emergency. If you're in the city centre, elsewhere in Leeds or further away, you can contact the police to get urgent help.



UNIVERSITY SECURITY OFFICE

This service operates 24-hours a day, every day of the year. Security staff offer crime prevention advice respond to emergencies and deal with lost property. Contact them for information and advice about an emergency on campus or in University accommodation, or to report a crime.

175 Woodhouse Lane
+44 (0) 113 343 5494 (general enquiries)
+44 (0) 113 343 2222 (emergencies only)
www.leeds.ac.uk/security

WEST YORKSHIRE POLICE

The police service keeps Leeds safe, attends emergencies off campus and gives crime prevention advice.

Dial **101** for any non-emergencies or to report a crime. The emergency number for police off campus is **999**, where there is a danger to life, or when a crime is happening. If you're on campus call **+44 (0) 113 343 2222**
www.westyorkshire.police.uk

OPENING A BANK ACCOUNT

You may want to open a UK bank account to pay your fees in instalments and to set up regular payments for items such as bills.

DECIDING WHICH ACCOUNT TO OPEN

If your visa is for 12 months or more, you'll have a large choice of bank accounts. If your visa is for less than 12 months, you'll have a more limited choice of bank accounts you can open.

We have created a bank account comparison table to help you choose your bank account. Check to see what documents you need and how long you must be in the UK to open each account.
students.leeds.ac.uk/bankaccounts

BANK INTRODUCTION LETTER

Most banks will need to see a letter from the University to open an account for you. During online registration enter your correct permanent home address outside of the UK and your term-time address inside the UK. The University will then email your bank introduction letter to you. If you make any changes to your addresses or your name, you'll receive an email with an updated letter the following working day. Make sure both addresses are correct and are not left blank, as this may mean you do not receive your bank introduction letter.

Our bank introduction letter can be used at the Leeds branches of Barclays, HSBC, Lloyds and Santander. If you choose to bank elsewhere and need a different bank introduction letter, you can order one from **www.students.leeds.ac.uk/registrationcertificate**



MANAGING YOUR MONEY

It's likely that your first few weeks in Leeds will be more expensive than an average week once you've settled in. You'll need to think about budgeting for essentials like food and travel expenses, as well as saving money for any activities you want to take part in. While many events and activities are free, you may need to pay for some.

Many retailers offer a student discount with a TOTUM card or the UNiDAYS app. If you're not sure just ask, as the discount may not be advertised. You can apply for a TOTUM card online at www.nus.org.uk or sign up for a free UNiDAYS account at www.myunidays.com

MONEY ADVICE FROM LEEDS UNIVERSITY UNION ADVICE

LUU Advice can give you advice on managing your money and support with financial issues. luu.org.uk/student-advice

PROTECT YOURSELF FROM FRAUD

We are aware that international students at universities in the UK can be targeted by fraudsters, pretending to work for the Home Office UK Visas and Immigration (UKVI), or for the police or another official authority in their home country. These fraudsters phone students and say there is a problem with their visa or tell them they are suspected of a crime such as money laundering. The fraudsters usually ask for payment and personal details. If you receive such a call, end the call immediately, block the number that called you and seek advice from the International Student Office.

students.leeds.ac.uk/fraudulentcalls

INTERNATIONAL LEEDS HARDSHIP FUND

You are expected to have sufficient funding in place at the start of your studies to cover all study-related costs, including tuition fees and living expenses, such as accommodation, utilities, food and travel. However, if you do find yourself in unexpected financial hardship, contact Leeds University Advice on luu.org.uk/student-advice

They can help you apply for any hardship funding you may be eligible for, including the International Leeds Hardship Fund.

students.leeds.ac.uk/internationalhardship

FOOD AND SHOPPING

Leeds has lots of shops for food, bedding, kitchen equipment, electrical items, cleaning and bathroom products.

LOCAL SHOPS

Across the road from campus, on Woodhouse Lane, there are shops, banks and cafés. There are more shops in the city centre, Headingley and surrounding areas, including supermarkets such as Morrisons, Sainsbury's, Tesco and Co-op Food which also offer online shopping. There are also specialist stores in the city centre for household items, such as Wilko and Argos.

Kirkgate Market is near the city bus station and is one of the largest covered markets in Europe. It sells a wide range of food and other items on market stalls and many are very good value for money.

INTERNATIONAL FOODS

There are many places to buy international food ingredients in Leeds. For details of specialist international, halal and kosher food shops, visit students.leeds.ac.uk/essentialitems

FOOD, DRINK AND SHOPS ON CAMPUS

The University's catering service, Great Food at Leeds, offers fresh food (from sandwiches to hot meals) in our many cafés across campus or in our award-winning Refectory. Where possible products are locally sourced, seasonal and Fairtrade. For the latest COVID-19 updates about our catering facilities, visit gfal.leeds.ac.uk



Find out how you can save money in any of the Great Food at Leeds cafés using the GFaL Club app at gfal.leeds.ac.uk/club

Although the city centre is only a short walk from campus, you can buy most things in the Leeds University Union building such as everyday groceries, health food and stationery. There's a Co-op Food store, an optician and a variety of places to eat and drink. During term time, there are often events outside the Union building, including a farmers' market. luu.org.uk

The University and Leeds University Union have made a pledge to remove single-use plastic by 2023. sustainability.leeds.ac.uk/plasticfree



FINDING YOUR WAY AROUND

You can download a map of the campus and a list of key buildings at www.leeds.ac.uk/campusmap

Find out about some of the things you can do and see on campus in Leeds at www.leeds.ac.uk/campuslife www.leeds.ac.uk/citylife

The campus is only a short walk from the city centre and is easy to get around.

Maps, signposts and building signs can be found across campus and the city centre to help you find your way.

Leeds is a compact city and it's easy to get around whether you're on foot, cycling or on a bus. Find out more about your travel options at sustainability.leeds.ac.uk/sustainable-transport

CYCLING AND WALKING

Most students live within walking distance of campus, helping you save money on travel costs. Leeds City Council is also improving existing cycle lanes and creating a network of new pop-up lanes, making it safer to cycle around the city.

If you're thinking about cycling to campus, there are bike racks you can use with your own lock to secure your bike. All our residences also have secure bike storage. You can buy a lock at a discounted price from the Bike Hub or Security Service.

The University's Bike Hub is located on campus, between the EC Stoner Building and the Roger Stevens Building. The Hub offers low-cost bike hire, as well as bike maintenance support and route advice. Check the Bike Hub opening times and contact details at sustainability.leeds.ac.uk/sustainable-transport/bike-hub

When cycling or crossing roads in the UK, remember to take extra care as vehicles may be travelling on the opposite side of the road to what you are used to.



BUS

Leeds has an excellent bus service, with frequent buses running throughout the day and into the early hours. There are fewer seats available due to social distancing, so make sure you allow plenty of time for your journey. You must wear a face mask on public transport.

All our student residences are on, or close to, frequent bus routes, making it easy for you to travel to and from the University. Single journeys on First Bus, between our campus and University residences, cost just £1.20 on the First Bus app or £1.30 by contactless payment with student ID. If you're going to travel regularly by bus, there are various discounted student travel tickets to help save you money.

Find out more, including the latest COVID-19 safety measures in place on local buses, at www.firstgroup.com/leeds www.arrivabus.co.uk/yorkshire

If you've been studying late or you've been on a night out, you can use Leeds University Union's Nightbus, which will take you from Leeds University Union to your home (within the outer ring road) for just £1. The service runs every weeknight during term time from 6.30pm until late. Spaces are limited on each journey to ensure social distancing, so you should always plan an alternative way home.

COACH

For travel between major cities in the UK, coaches are generally cheaper than trains but take longer. There are currently fewer seats and a reduced number of services because of social distancing, so it's a good idea to book your travel in advance. Most coach services run by National Express and Megabus arrive and depart at the Leeds City Bus and Coach Station in the city centre. Some National Express services also stop outside the Parkinson Building. www.nationalexpress.com uk.megabus.com



TRAIN

If you're planning on travelling further out of the city, trains are often faster but usually more expensive than coach travel. There are currently fewer seats available due to social distancing, so plan ahead to avoid busy times. If you book two weeks or more in advance, you're more likely to get a cheaper fare. You can also save money by being flexible with your travel dates and times and by using a Railcard. www.nationalrail.co.uk

National Rail offers Railcards for full-time students, young adults, those who travel with children and for two people who travel together. www.railcard.co.uk

If you need extra assistance with your journey, contact staff at the train station. www.nationalrail.co.uk/stations

TAXI

There are taxi ranks outside the Parkinson Building and at the bus, coach and train stations, as well as at points around the city centre. You can also stop black taxis and white taxis in the street, but check that the orange taxi sign on the vehicle roof is lit up, showing that it's available.

Other taxi companies, which are sometimes cheaper, can be booked in advance by phone, online or by using one of their mobile apps.

Only use marked taxi cars and ask the driver beforehand to estimate of how much the journey will cost.

Some local taxi companies are:

Amber Cars +44 (0)113 202 2112

Arrow Cars +44 (0)113 258 5888

City Cabs +44 (0)113 246 9999

Streamline Taxicabs +44 (0) 113 244 3322



FEELING AT HOME IN LEEDS

We hope that you'll soon be feeling at home in Leeds.

Settling into a new social, cultural and academic environment is exciting but can also feel challenging and can take time. While everyone's journey is different, many experiences are shared. Whether you have recently arrived in Leeds or you have been in Leeds for some time, there's support to help you to feel part of the University community and have a positive experience.

GROUP WORKSHOPS

Our group workshops create opportunities for you to connect with other international students and develop useful strategies to navigate cultural difference and take care of your wellbeing as you continue to adapt to change. students.leeds.ac.uk/feelingathome



ONLINE GUIDES

Explore our online guides to hear about other students' experiences, which may be similar or different from your own. Reflective activities will help you find support, discover opportunities and meet your personal goals. students.leeds.ac.uk/feelingathome



ALTERNATIVE FORMATS

If you require any of the information contained in this guide in an alternative format eg Braille, large print or audio, email disability@leeds.ac.uk

CONNECT WITH US





UNIVERSITY OF LEEDS

University of Leeds
Leeds LS2 9JT
www.leeds.ac.uk